



R2/1600EL  
ROLLER TRAILER

**SBS TRAILERS**  
com  
GREAT BRITISH BOAT TRAILERS



R2/1600EL

SBS  
Difference

Type  
Approved

Specification

Design

Versatility

Extras

Contact

Ever since the first SBS Trailer was created in 1957, we have pushed expectations and design. Our trailers have enabled their owners to tow with confidence and launch and recover with ease. They are manufactured from exemplary engineering and construction techniques, which is why we are the recognised leaders in quality and assurance.

SBS, getting you safely from A to B to Sea.



R2/1600EL

SBS  
Difference

Type  
Approved

Specification

Design

Versatility

Extras

Contact

## R2/1600EL

The R2/1600EL fully braked, type approved boat trailer is perfect for boats up to 1200kgs and with a length up to 5.3m when measured from boweye to transom (BET). It offers excellent ease-of-use and is well suited to a wide variety of launch and recovery environments.



Image for illustrative purposes only



## WHY SBS IS GREAT FOR YOU

### EXPERTISE

With a boating background, we know boats. We provide a consultative sales process, to make sure you're getting exactly what you need.

### LONGEVITY

We are the longest established boat trailer company in the UK. As a result of this we have earned a strong reputation for quality and durability. Which in turn, has resulted in our trailers having the highest market residuals.

### BUILD QUALITY

Our build quality is second to none. With a fully welded chassis, we are the only manufacturer to provide a lifetime warranty on the structural integrity of the chassis.

### EXCLUSIVE ACCESS

As an SBS customer you will gain exclusive access to discounts, in addition to our technical support line.





## WHAT IS A TYPE APPROVED TRAILER?

SBS was the first boat trailer company to achieve whole vehicle type approval back in 2011. The regulation passed into UK law in October 2012 and from that date all manufacturers had to comply.

There is also the National Small Series Approval's (NSS). This is for smaller manufacturers making to the UK standard.

What this means to you as a customer is that you can have confidence buying from a company with these approvals. As they are audited independently, they should operate a professional business, producing a credible product.

We hold both EU and NSS Approvals.

We primarily sell the full EU Type Approved trailer models. This means you are buying a trailer that is ready to be exported and registered abroad or indeed can tow with a local registered car after this process.

But more than that we have spec'd it with some additional equipment that we feel contributes to making the trailer a better, safer option than many alternatives.

Our EU trailers come with a higher specification and include:

- Side LED marker lights as well as a forward facing LED marker lights
- Hub Flush kits to prolong the brakes and braking mechanism
- Padded Side steps for extra grip when boarding/alighting from the boat onto the trailer
- Integrated first level lock within the coupling head



These are all fantastic additions to an already well equipped trailer package.

However, if these features do not appeal to you or add value then please contact our sales team on 01902 754133 and they would be happy to quote for a lesser spec for a UK model.

Make sure you are comparing like for like when you look at other manufacturers as many quote a 'stripped down' version to keep prices low.



# SPECIFICATION

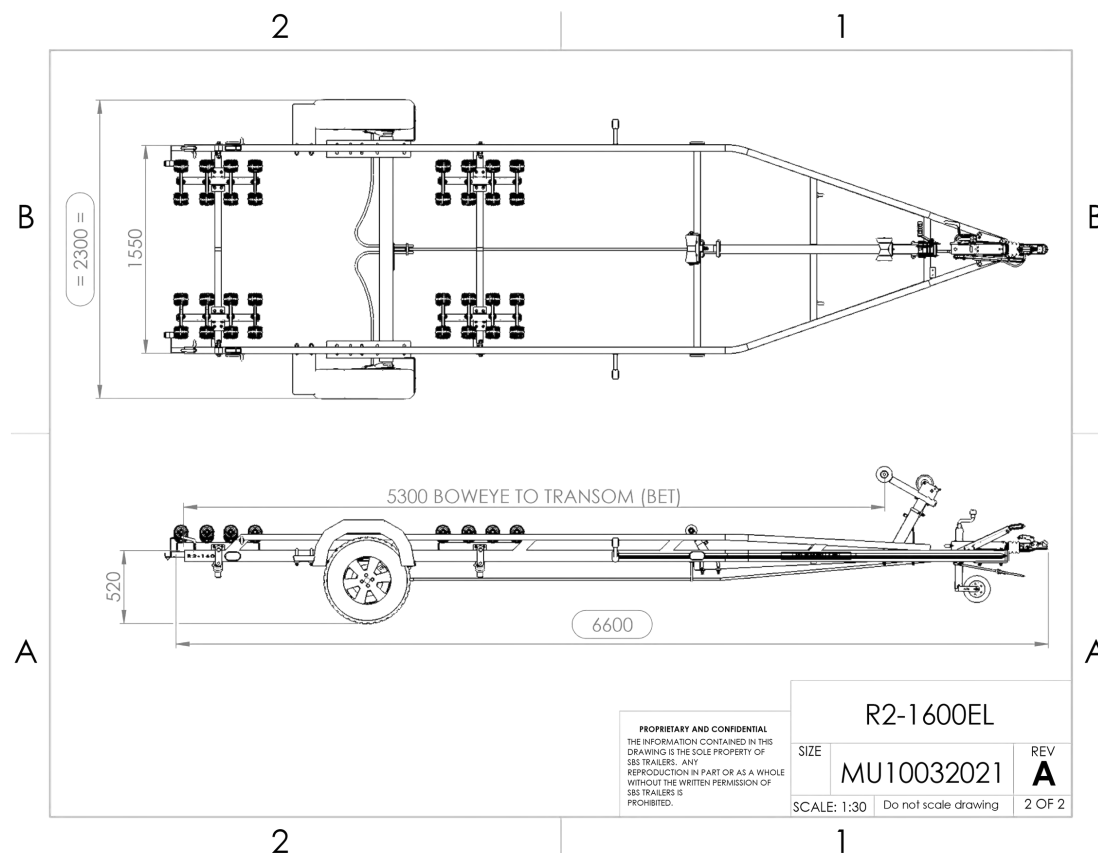
Gross Capacity (kg)	1600
Load Capacity (kg)	1200
Length Capacity (m) (BET)	5.3
Weight (kg)	350
Dimensions (m)	2.3 x 6.6
Tyre Size	185/R13
No. of Swing Beams	1
No. of Non Marking Rollers	32
Twin Speed Winch Capacity (lbs)	2000
Webbing Strap Width (mm) with snap hook	50

\*Specification correct for standard trailer, length can be shortened or extended, 'V' back available for inboard engine boats, and unlimited roller and bunk configurations available.

RIB BOAT TRAILER MEASUREMENTS



MOTORBOAT TRAILER MEASUREMENTS





## What's great about our roller trailers:

Our rollers really do roll!

Made from non-marking PVC with a plastic bore our rollers are designed not to deform under load or in hot conditions. Matched with our custom made brackets they offer excellent support for your boat and provide superb launch and recovery capabilities.

Not just any roller, an SBS roller!

Ours have a small shoulder on them which is not just there to look pretty.

As the boat is recovered and it comes into contact with the roller that small shoulder ensures the boat 'pushes' the roller down so it follows the shape of the hull. Square edge rollers don't always allow for this and the hull can actually ride on top of them which is far from ideal.

Similarly, we have our secret wedge that ensures our brackets can only tilt inboard to the shape of the hull so you get a perfect recovery every time.

You will notice that our grooves are cut into the roller. The grooves are there to ensure water can drain away and not sit trapped against the hull. By cutting into the body of the roller the outside is completely smooth. This means you do not get point loading on the hull as the roller turns. Other 'ribbed' type rollers exert an enormous amount of pressure – albeit for a split second – every time a rib comes into contact with the hull.

Your boat could end up having its weight supported on the edge of one of these ribs which would cause massive point loading. This can never happen on an SBS roller.

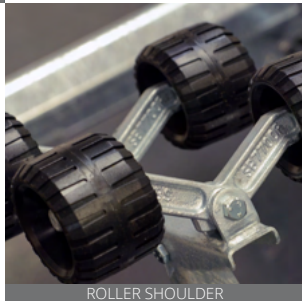
The care and wellbeing of your boat is just as important to us, which is why we put so much thought into every aspect of our trailer design and build.



SECURE LASHING LUGS



REAR LIGHT BOARD



ROLLER SHOULDER



TWIN SPEED WINCH



INTEGRATED LOCK IN COUPLINGS



LED SIDE LIGHTS



## MATERIALS & FABRICATION

Suppliers are carefully chosen to ensure we maintain our superior quality, whilst also using locally sourced premium materials. We cut, weld and assemble all trailers on site. Fully welded trailers are standard across the entire SBS range, so you can be confident in the quality and integrity of your trailer.



## UNMISTAKEABLE DESIGN

SBS trailers feature a distinctive signature stripe, designed to enhance your trailer's contemporary appeal. Constructed to last a lifetime, your R2/1600EL trailer comes with a limited lifetime warranty as standard.\*

\*Register your trailer within 1 month of purchase, to receive limited lifetime warranty.



R2/1600EL

SBS  
Difference

Type  
Approved

Specification

Design

Versatility

Extras

Contact



## BESPOKE DESIGN

### STYLE

We offer customisation of our existing trailer range in addition to fully bespoke trailer builds. We can build our trailers to your boats exact specification to ensure the perfect fit and ultimate support.



### CHOOSE YOUR COLOUR

All our trailers can be powder coated or painted in any colour to match your boat or aesthetic.

### CHOOSE YOUR WHEELS

We offer a range of wheel in various finishes, to ensure complete personalisation.



## ULTIMATE ADAPTABILITY

Our trailers are all fully adjustable to ensure the perfect fit to your boat. The axle position, snubber post, winch height and rollers are easily hand adjusted to provide excellent support.

## TOW IN CONFIDENCE

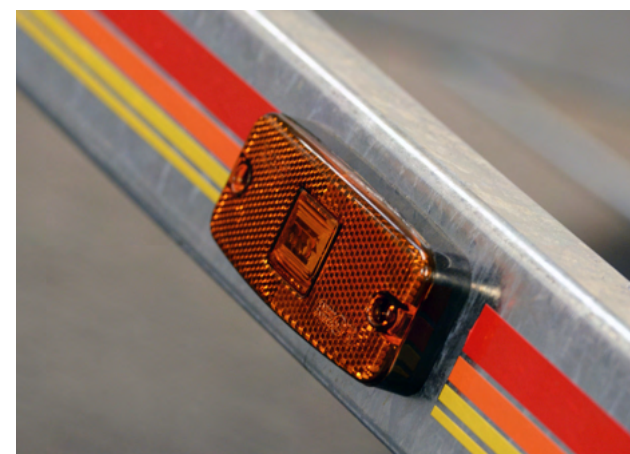
All SBS Trailers are fully welded. This provides a stronger, stiffer, safer tow and is far superior to a bolt together trailer. We are the only manufacturer to offer a limited lifetime warranty.

## SAFETY

With a removeable rear light board, reflectors, LED side markers\* and forward facing white LEDs\*, our trailers ensure you can see and be seen.

## TYPE APPROVAL

All our trailers conform to the latest type approval legislation. SBS was the first manufacturer in the UK to be awarded type approval for both the UK and EU.



\*UK/ EU model dependent.



## OPTIONAL EXTRAS

**Insurance approved wheel lock** - We stock a variety of insurance approved wheel locks to fit different wheel widths. All wheel locks are easy to fit and insurance approved, to give you peace of mind.

**Float'em poles** - Float'em Poles are low profile telescopic guide / docking poles that extend as you enter the water, designed to make launch & recovery easy.

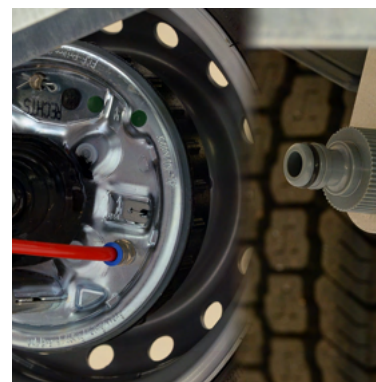
**Ratchet straps** - With a selection of widths and lengths available, all ratchet straps are manufactured in accordance with British Standards.

**Spare wheel & bracket** - All our trailers can be fitted with a spare wheel and bracket.

**Hub flush kit** - All our braked trailers can be fitted with hub flush kits to ensure the longevity of the hub and brakes.

**Padded side step** - Increased grip and comfort for safer use.

**Hitch lock** - We stock a variety of insurance approved hitch locks for added security.





R2/1600EL

SBS  
Difference

Type  
Approved

Specification

Design

Versatility

Extras

Contact

CONTACT US FOR FURTHER ADVICE AND INFORMATION  
+44 (0)1902 754 133 | SALES@SBSTRAILERS.COM

VIEW A DIFFERENT MODEL

FOLLOW US



@sbs\_trailers



@sbstrailers



@sbstrailersltd

#FollowTheStripe

#GreatBritishBoatTrailers

#SBSTrailers

SBS Trailers, Macrome Rd, Wolverhampton, WV6 9HD

SBS TRAILERS | [WWW.SBSTRAILERS.COM](http://WWW.SBSTRAILERS.COM)

Information and specification in this brochure are subject to change at any time with no notification.

**SBS TRAILERS**  
com  
GREAT BRITISH BOAT TRAILERS